

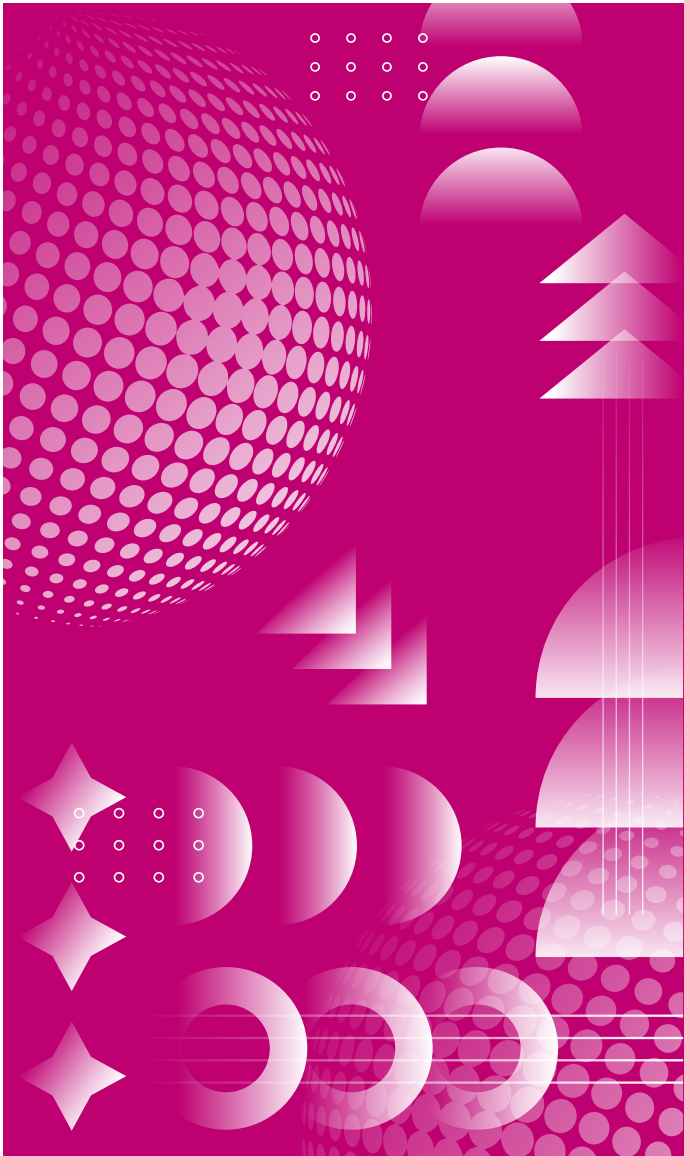
Hong Leong PRS Asia Pacific Fund

Semi-Annual Report

Financial Period Ended 31 January 2025

2024/2025

Unaudited



HONG LEONG PRS ASIA PACIFIC FUND

Contents

	Page
PRS Provider's Review and Report	1-8
Statement by the PRS Provider	9
Scheme Trustee's Report	10
Condensed Statement of Comprehensive Income	11
Condensed Statement of Financial Position	12
Condensed Statement of Changes in Equity	13
Condensed Statement of Cash Flows	14
Notes to the Condensed Financial Statements	15-32
Performance Data	33-34
Corporate Information	35
Corporate Directory	36

PRS Provider’s Review and Report

I. FUND INFORMATION

Fund Name

Hong Leong PRS Asia Pacific Fund (“HLPRSAPF” or “the Fund”)

Fund Category

Fund-of-Funds (Equity)

Fund Type

Not Applicable

Investment Objective

The Fund aims to achieve capital growth by investing primarily in collective investment schemes with exposure in the Asia Pacific ex Japan markets.

Duration of the Fund and its termination date, where applicable

Not Applicable

Benchmark

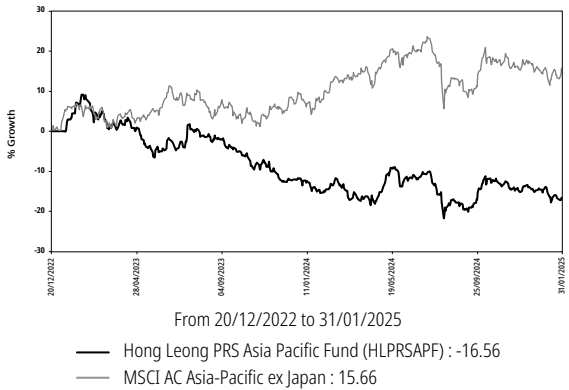
MSCI AC Asia-Pacific ex Japan

Distribution Policy

Incidental. Distribution, if any, will be automatically reinvested into the Fund.

II. FUND PERFORMANCE

Chart 1: Performance of the Fund versus the benchmark since launch



Source: Lipper, in Malaysian Ringgit terms, ex-distribution, NAV Per Unit-to-NAV Per Unit basis with gross income (if any) from HLPRSAPF reinvested.

Past performance is not necessarily indicative of future performance and unit prices and investment returns may go down, as well as up.

Performance Review

This Semi-Annual Report covers the six-month financial period from 1 August 2024 to 31 January 2025.

The Fund posted a return of -1.25% (based on NAV Per Unit-to-NAV Per Unit basis with gross income (if any) from the Fund reinvested) in the past six months while its benchmark the MSCI AC Asia-Pacific ex Japan registered a return of -1.08%.

Since launch, the Fund has registered a return of -16.56% compared to the benchmark's return of 15.66%.

Table 1: Performance of the Fund for the following periods as at 31 January 2025 (Source: Lipper)

	3 Months	6 Months	1 Year	Since Launch
HLP RSAPF Return (%)	-3.80	-1.25	-1.35	-16.56
Benchmark (%)	-0.58	-1.08	7.95	15.66

Table 2: Return of the Fund based on NAV Per Unit-to-NAV Per Unit basis for the period 31 July 2024 to 31 January 2025 (Source: Lipper)

	31-Jan-25	31-Jul-24	Return (%)
NAV Per Unit	RM0.4172	RM0.4225	-1.25
Benchmark	2,570.36	2,598.35	-1.08
vs Benchmark (%)	-	-	-0.17

Table 3: Financial Highlights

The Net Asset Value attributable to members is represented by:

	31-Jan-25 (RM)	31-Jul-24 (RM)	Change (%)
Members' Capital	358,031	313,541	14.19
Accumulated Loss	(37,340)	(32,795)	(13.86)
Net Asset Value	320,691	280,746	14.23
Units in Circulation	768,601	664,543	15.66

Table 4: The Highest and Lowest NAV Per Unit, Total Return of the Fund and the breakdown into Capital Growth and Income Distribution for the financial periods ended 31 January/31 July and financial year ended 31 July

	Financial Period Jan 2025	Financial Year 2024	Financial Period Jul 2023*
Highest NAV Per Unit (RM)	0.4439	0.4987	0.5458
Lowest NAV Per Unit (RM)	0.3917	0.4078	0.4672
Capital Growth (%)	-1.25	-15.74	0.28
Income Distribution (%)	-	-	-
Total Return (%)	-1.25	-15.74	0.28

* The figure shown is for the period since Fund launch (20 December 2022 to 31 July 2023).

Source: Lipper, in Malaysian Ringgit terms, ex-distribution, NAV Per Unit-to-NAV Per Unit basis with gross income (if any) from HLP RSAPF reinvested.

Table 5: Average Total Return of the Fund for the financial period ended 31 January 2025

	1 Year
Average Total Return (%)	-1.35

Source: Lipper, in Malaysian Ringgit terms, ex-distribution, NAV Per Unit-to-NAV Per Unit basis with gross income (if any) from HLP RSAPF reinvested.

Table 6: Annual Total Return of the Fund for the financial period and year ended 31 July

Financial Year/Period	2024	2023
Annual Total Return (%)	-15.74	0.28*

* The figure shown is for the period since Fund launch (20 December 2022 to 31 July 2023).

Source: Lipper, in Malaysian Ringgit terms, ex-distribution, NAV Per Unit-to-NAV Per Unit basis with gross income (if any) from HLP RSAPF reinvested.

III. INVESTMENT PORTFOLIO

Chart 2: Asset Allocation – August 2024 to January 2025

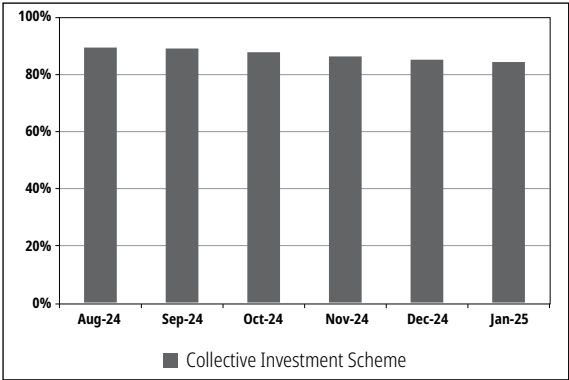
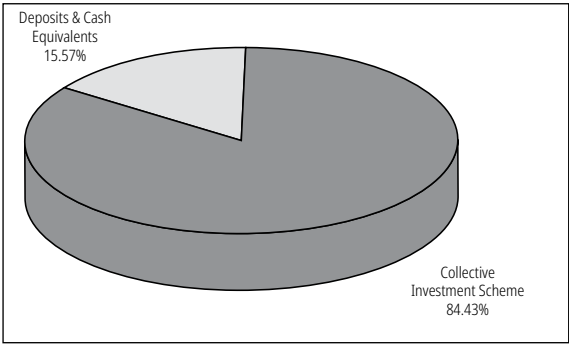


Chart 3: Sector Allocation as at 31 January 2025



Strategies employed by the Fund during the period under review

During the financial period under review, the Fund increased its invested level to take advantage of the weak market sentiment. The Fund took some profit in its Hong Kong and Taiwan holdings and reallocate the cash to Australia, Singapore, Indonesia and South Korea markets. The Fund is positioned in quality stocks across the region which are expected to weather the near-term economic downturn and benefit from the long-term structural demand growth in Asia driven by Artificial Intelligence (AI) and Data Centre (DC) related themes.

An explanation on the differences in portfolio composition

During the financial period under review, the Fund maintained its allocation to Hong Leong Asia-Pacific Dividend Fund as per the mandate.

Operational review of the Fund

The 2nd Supplemental Disclosure Document for the Hong Leong Private Retirement Scheme - Conventional dated 9 December 2024 was issued during the financial period under review to reflect various changes made to the Fund. Kindly refer to www.hlam.com.my for the list of changes made to the Fund.

IV. MARKET REVIEW

During the financial period under review, investors exhibited some level of caution as 2024 drew to a close, primarily driven by higher policy uncertainty anticipated for 2025, stemming from fiscal policy adjustment, the trajectory of monetary policy, and international trade frictions. The market experienced a sharp downturn following the Federal Open Market Committee’s (FOMC) December meeting, where the central bank signalled a more hawkish monetary policy stance than anticipated and revealed a large step-up in the median projection for core inflation next year, from 2.2% to 2.5%. Adding to the market’s woes was the unexpected threat of a federal government shutdown in mid-December which injected further uncertainty before being resolved later through the passing of a short-term funding bill. However, Trump’s demand to increase or suspend the debt ceiling for 2025 was not met, suggesting that the Treasury Department may need to implement extraordinary measures when the reinstated debt ceiling is reached.

The United States (US) economic data for December presented a mixed picture. Purchasing Managers’ Index (PMI) fell short of expectations, plummeting to near the lows seen during the COVID-19 lockdown period as the US manufacturing sector grappled with a harsh winter. The Consumer Confidence Index (CCI) pulled back significantly to 104.7 in December from 111.7 in November as the post-election euphoria subsided, leading to diminished optimism regarding future business conditions and income prospects. Conversely, pending home sales reached a 21-Month high in November, exhibiting a growth of 2.2%, surpassing the market forecast of 0.9%.

Eurozone inflation accelerated for the second consecutive month, reaching 2.2% in November, up from 2.0% in October. While services inflation eased slightly to 3.9%, core inflation remained steady at 2.7%. The European Central Bank (ECB) cut interest rates for the fourth time this year, lowering them from 3.25% to 3.00%, 100-basis points below the 4.00% observed in June 2024. Indications suggest potential for further rate cuts in 2025, as the central bank removed the reference to maintaining “sufficiently restrictive” rates. Economists generally perceive the neutral interest rate range, neither stimulating nor hindering growth, to be between 2% and 2.5%.

December Tokyo-area core Consumer Price Index (CPI) rose to 2.4%, exceeding November’s 2.2% but falling short of the consensus estimate of 2.5%. Although the inflation figures met the Bank of Japan’s (BoJ) 2% inflation target, interest rates were held unchanged in December as the policymaker opted to tread cautiously in adjusting borrowing costs amidst uncertainty surrounding the incoming US administration’s policies.

The People’s Bank of China (PBoC) injected RMB1.7 trillion of liquidity into the economy in December, including a RMB300 billion net purchase of treasury bonds. The 1-Year and 5-Year Loan Prime Rate were maintained at 3.1% and 3.6% respectively. The policymaker emphasized their support for a moderately loose policy given the potential escalation of trade tension. China’s industrial profits declined 7% in November, an improvement from the sharper decline of 10% in October and a 27% plunge in September. This moderation reflects the gradual improvement in the Chinese economy given the slew of stimulus measures implemented since late September.

V. FUTURE PROSPECTS AND PROPOSED STRATEGIES

We believe DeepSeek’s emergence aligns with Moore’s Law and the ongoing advancement of AI. Such innovations, while potentially disruptive short-term, ultimately drive broader AI adoption, increasing long-term demand for DCs and hardware. Thus, the long-term growth trajectory of AI and its infrastructure needs remains strong. Asian hardware stocks, particularly those in Taiwan linked to the NVIDIA Corporation (NVDA) supply chain, face near-term risks due to concerns about reduced hardware demand and potential chip restrictions. Conversely, software application, and internet names, especially Chinese large caps and selected Korean internet companies are expected to find near-term support through sector rotation. We maintain financial and utilities as the core sectors of our portfolio holdings, while adding healthcare sector to diversify against the near-term volatilities due to external trade policies uncertainties.

VI. SOFT COMMISSIONS

The PRS Provider may receive soft commissions from brokers/dealers in the form of goods and services such as research materials, data and quotation services incidental to investment management of the Fund and investment related publications. Such soft commissions received are utilised in the investment management of the Fund and are of demonstrable benefit to the Fund and members and there was no churning of trades.

During the financial period under review, the Fund has not received goods or services by way of soft commissions.

VII. SECURITIES LENDING OR REPURCHASE TRANSACTIONS

No securities lending or repurchase transactions have been carried out during the financial period under review.

VIII. CROSS TRADE TRANSACTIONS

No cross trade transactions have been carried out during the financial period under review.

STATEMENT BY THE PRS PROVIDER

I, Chue Kwok Yan, as the Director of Hong Leong Asset Management Bhd, do hereby state that, in the opinion of the PRS Provider, the accompanying unaudited condensed financial statements set out on pages 11 to 32 are drawn up in accordance with the provision of the Deeds and give a true and fair view of the financial position of the Fund as at 31 January 2025 and of its financial performance, changes in equity and cash flows for the financial period ended 31 January 2025 in accordance with the Malaysian Financial Reporting Standard 134 “Interim Financial Reporting” and International Accounting Standard 34 “Interim Financial Reporting”.

For and on behalf of the PRS Provider,
Hong Leong Asset Management Bhd
(Company No.: 199401033034 (318717-M))

CHUE KWOK YAN
Chief Executive Officer/Executive Director

Kuala Lumpur
21 March 2025

SCHEME TRUSTEE’S REPORT

TO THE MEMBERS OF HONG LEONG PRS ASIA PACIFIC FUND (“Fund”)

We have acted as Scheme Trustee of the Fund for the financial period ended 31 January 2025 and we hereby confirm to the best of our knowledge, after having made all reasonable enquiries, **Hong Leong Asset Management Bhd** has operated and managed the Fund during the period covered by these financial statements in accordance with the following:

1. Limitations imposed on the investment powers of the PRS Provider under the deed, securities laws and the Guidelines on Private Retirement Schemes;
2. Valuation and pricing is carried out in accordance with the deed; and
3. Any creation and cancellation of units are carried out in accordance with the deed and any regulatory requirement.

For and on behalf of
CIMB Commerce Trustee Berhad

Tok Puan Datin Ezreen Eliza binti Zulkiplee
Chief Executive Officer

Kuala Lumpur, Malaysia
21 March 2025

CONDENSED STATEMENT OF COMPREHENSIVE INCOME *(Unaudited)*

FOR THE FINANCIAL PERIOD ENDED 31 JANUARY 2025

	Note	2025 RM	2024 RM
INVESTMENT LOSS			
Interest income from financial assets measured at amortised cost		568	608
Net loss on financial assets at fair value through profit or loss ("FVTPL")	9	(2,251)	(31,810)
		(1,683)	(31,202)
EXPENDITURE			
Management fee	4	(2,692)	(1,770)
Scheme Trustee's fee	5	(60)	(40)
Private Pension Administrator ("PPA") administration fee	6	(60)	(40)
Other expenses		(50)	(52)
		(2,862)	(1,902)
LOSS BEFORE TAXATION			
Taxation	8	(4,545)	(33,104)
		-	-
LOSS AFTER TAXATION AND TOTAL COMPREHENSIVE LOSS FOR THE FINANCIAL PERIOD			
		(4,545)	(33,104)
Loss after taxation is made up as follows:			
Realised amount		58	120
Unrealised amount		(4,603)	(33,224)
		(4,545)	(33,104)

The accompanying notes to the financial statements form an integral part of these unaudited condensed financial statements.

CONDENSED STATEMENT OF FINANCIAL POSITION *(Unaudited)*

AS AT 31 JANUARY 2025

	Note	31.01.2025 RM	31.07.2024 RM
ASSETS			
Cash and cash equivalents		50,024	26,999
Amount due from the PRS Provider			
-management fee rebate		418	404
Financial assets at FVTPL	9	270,750	253,853
Tax recoverable		14	14
TOTAL ASSETS		321,206	281,270
LIABILITIES			
Amount due to the PRS Provider			
-management fee		493	447
Amount due to the Scheme Trustee		11	10
Amount due to the PPA		11	67
TOTAL LIABILITIES		515	524
NET ASSET VALUE OF THE FUND		320,691	280,746
EQUITY			
Members' capital		358,031	313,541
Accumulated loss		(37,340)	(32,795)
NET ASSETS ATTRIBUTABLE TO MEMBERS		320,691	280,746
UNITS IN CIRCULATION (UNITS)	10	768,601	664,543
NET ASSET VALUE PER UNIT (RM)		0.4172	0.4225

The accompanying notes to the financial statements form an integral part of these unaudited condensed financial statements.

CONDENSED STATEMENT OF CHANGES IN EQUITY *(Unaudited)*

FOR THE FINANCIAL PERIOD ENDED 31 JANUARY 2025

	Members' capital RM	Accumulated loss RM	Total RM
Balance as at 1 August 2024	313,541	(32,795)	280,746
Movement in net asset value:			
Creation of units from applications	46,504	-	46,504
Cancellation of units from applications	(2,014)	-	(2,014)
Total comprehensive loss for the financial period	-	(4,545)	(4,545)
Balance as at 31 January 2025	<u>358,031</u>	<u>(37,340)</u>	<u>320,691</u>
Balance as at 1 August 2023	117,841	715	118,556
Movement in net asset value:			
Creation of units from applications	186,046	-	186,046
Total comprehensive loss for the financial period	-	(33,104)	(33,104)
Balance as at 31 January 2024	<u>303,887</u>	<u>(32,389)</u>	<u>271,498</u>

The accompanying notes to the financial statements form an integral part of these unaudited condensed financial statements.

CONDENSED STATEMENT OF CASH FLOWS *(Unaudited)*

FOR THE FINANCIAL PERIOD ENDED 31 JANUARY 2025

	2025 RM	2024 RM
CASH FLOWS FROM OPERATING ACTIVITIES		
Purchase of financial assets at FVTPL	(21,500)	(157,433)
Interest income received from financial assets measured at amortised cost	568	608
Management fee rebate received	2,338	1,215
Management fee paid	(2,646)	(1,528)
Scheme Trustee's fee paid	(59)	(34)
PPA administration fee paid	(116)	(34)
Payment for other fees and expenses	(50)	(52)
Net cash used in operating activities	<u>(21,465)</u>	<u>(157,258)</u>
CASH FLOWS FROM FINANCING ACTIVITIES		
Proceeds from creation of units	46,504	185,811
Payments for cancellation of units	(2,014)	-
Net cash generated from financing activities	<u>44,490</u>	<u>185,811</u>
NET INCREASE IN CASH AND CASH EQUIVALENTS	23,025	28,553
CASH AND CASH EQUIVALENTS AT THE BEGINNING OF THE FINANCIAL PERIOD	<u>26,999</u>	<u>22,222</u>
CASH AND CASH EQUIVALENTS AT THE END OF THE FINANCIAL PERIOD	<u>50,024</u>	<u>50,775</u>

The accompanying notes to the financial statements form an integral part of these unaudited condensed financial statements.

NOTES TO THE CONDENSED FINANCIAL STATEMENTS *(Unaudited)*

FOR THE FINANCIAL PERIOD ENDED 31 JANUARY 2025

1. THE FUND, THE PRS PROVIDER AND THEIR PRINCIPAL ACTIVITIES

Hong Leong PRS Asia Pacific Fund ("the Fund") was constituted pursuant to the execution of a Deed dated 24 June 2022 and Supplemental Deed dated 16 May 2023 between Hong Leong Asset Management Bhd ("the PRS Provider") and CIMB Commerce Trustee Berhad ("the Scheme Trustee") for the members of the Fund.

The Fund aims to achieve capital growth by investing primarily in collective investment schemes with exposure in the Asia Pacific ex Japan markets.

The Fund seeks to achieve its investment objective by investing in a basket of collective investment schemes that have similar investment objective to the Fund's investment objective of capital growth, through exposure in countries in the Asia-Pacific ex Japan region which include but are not limited to Australia, China, Hong Kong, India, Indonesia, Korea, Malaysia, New Zealand, Philippines, Singapore, Taiwan and Thailand. Investment in collective investment schemes will be confined to those managed by the Provider and have proven performance track record. The Fund will invest a minimum of 70% of its net asset value into equity collective investment schemes and up to 30% of its net asset value into fixed income and/or money market collective investment schemes. The Provider will actively monitor the Fund's investments in selected collective investment schemes to ensure optimal returns while adhering to the Fund's pre-determined asset allocation. The Provider has the flexibility to rebalance the asset allocation should it deem necessary based on the prevailing market conditions. The Fund commenced operations on 20 December 2022 and will continue its operations until terminated as provided under Part 14 of the Deeds.

The PRS Provider of the Fund is Hong Leong Asset Management Bhd, a company incorporated in Malaysia. The principal activity of the PRS Provider is the management of unit trust funds, private retirement schemes and private investment mandates. Its holding company is Hong Leong Capital Berhad, a company incorporated in Malaysia and listed on the Main Market of Bursa Malaysia Securities Berhad.

The financial statements were authorised for issue by the PRS Provider on 21 March 2025.

2. MATERIAL ACCOUNTING POLICY INFORMATION

The following accounting policies have been applied consistently in dealing with items which are considered material in relation to the financial statements:

(a) Basis of preparation

The condensed financial statements are unaudited and have been prepared in accordance with the Malaysian Financial Reporting Standard 134 "Interim Financial Reporting" and International Accounting Standard 34 "Interim Financial Reporting".

The condensed financial statements should be read in conjunction with the audited financial statements of the Fund for the financial year ended 31 July 2024 which have been prepared in accordance with the provisions of the Malaysian Financial Reporting Standards ("MFRS") and International Financial Reporting Standards.

(b) Financial assets and financial liabilities

Classification

The Fund classifies its financial assets in the following measurement categories:

- those to be measured subsequently at fair value through profit or loss, and
- those to be measured at amortised cost.

The Fund classifies its investments based on both the Fund's business model for managing those financial assets and the contractual cash flows characteristics of the financial assets. The portfolio of financial assets is managed and performance is evaluated on a fair value basis. The Fund is primarily focused on fair value information and uses that information to assess the assets' performance and to make decisions. The Fund has not taken the option to irrevocably designate any equity securities as fair value through other comprehensive income. The contractual cash flows of the Fund's debt securities are solely principal and interest, however, these securities are neither held for the purpose of collecting contractual cash flows nor held both for collecting contractual cash flows and for sale. The collection of contractual cash flows is only incidental to achieving the Fund's business model's objective. Consequently, all investments are measured at fair value through profit or loss.

The Fund classifies cash and cash equivalents and amount due from the PRS Provider as financial assets measured at amortised cost as these financial assets are held to collect contractual cash flows consisting of the amount outstanding.

The Fund classifies amount due to the PRS Provider, amount due to the Scheme Trustee and amount due to the PPA as financial liabilities measured at amortised cost.

Recognition and measurement

Regular purchases and sales of financial assets are recognised on the trade-date – the date on which the Fund commits to purchase or sell the asset. Investments are initially recognised at fair value.

Financial liabilities, within the scope of MFRS 9, are recognised in the statement of financial position when, and only when, the Fund becomes a party to the contractual provisions of the financial instrument.

Financial assets are derecognised when the rights to receive cash flows from the investments have expired or have been transferred and the Fund has transferred substantially all risks and rewards of ownership.

Financial liabilities are derecognised when it is extinguished, i.e. when the obligation specified in the contract is discharged or cancelled or expired.

Unrealised gains or losses arising from changes in the fair value of the financial assets at fair value through profit or loss are presented in the statement of comprehensive income within net gain or loss on financial assets at fair value through profit or loss in the period which they arise.

Dividend income from financial assets at fair value through profit or loss is recognised in the statement of comprehensive income as part of dividend income when the Fund's right to receive payments is established.

Unquoted collective investment scheme is valued at the last published net asset value per unit at the date of the statement of financial position.

Deposits with licensed financial institutions are stated at cost plus accrued interest calculated on the effective interest rate method over the period from the date of placement to the date of maturity of the respective deposits, which is a close estimate of their fair value due to the short term nature of the deposits. Financial assets at amortised cost and other financial liabilities are subsequently carried at amortised cost using the effective interest rate method.

Impairment

The Fund measures credit risk and expected credit losses using probability of default, exposure at default and loss given default. Management considers both historical analysis and forward looking information in determining any expected credit loss. Management considers the probability of default to be closed to zero as these instruments have a low risk of default and the counterparties have a strong capacity to meet their contractual obligations in the near term. As a result, no loss allowance has been recognised based on 12-month expected credit losses as any such impairment would be wholly insignificant to the Fund.

Significant increase in credit risk

A significant increase in credit risk is defined by management as any contractual payment which is more than 30 days past due.

Definition of default and credit-impaired financial assets

Any contractual payment which is more than 90 days past due is considered credit impaired.

Write-off

The Fund writes off financial assets, in whole or in part, when it has exhausted all practical recovery efforts and has concluded there is no reasonable expectation of recovery. The assessment of no reasonable expectation of recovery is based on unavailability of obligor's sources of income or assets to generate sufficient future cash flows to pay the amount. The Fund may write-off financial assets that are still subject to enforcement activity. Subsequent recoveries of amounts previously written off will result in impairment gains. There are no write-offs/recoveries during the financial period.

(c) Functional and presentation currency

Items included in the financial statements of the Fund are measured using the currency of the primary economic environment in which the Fund operates (the "functional currency"). The financial statements are presented in Ringgit Malaysia ("RM"), which is the Fund's functional and presentation currency.

(d) Income recognition

Dividend income is recognised on the ex-dividend date when the Fund's right to receive payment is established.

Interest income from deposits with licensed financial institutions and auto-sweep facility bank account are recognised on the effective interest rate method on an accrual basis.

Interest income is calculated by applying the effective interest rate to the gross carrying amount of a financial asset except for financial assets that subsequently become credit-impaired. For credit-impaired financial assets, the effective interest rate is applied to the net carrying amount of the financial asset (after deduction of the loss allowance).

Realised gain or loss on disposal of unquoted collective investment scheme is accounted for as the difference between the net disposal proceeds and the carrying amount of unquoted collective investment scheme, determined on a weighted average cost basis.

(e) Cash and cash equivalents

For the purpose of statement of cash flows, cash and cash equivalents comprise cash at banks and deposits held in highly liquid investments that are readily convertible to known amounts of cash with an original maturity of three months or lesser which are subject to an insignificant risk of changes in value.

(f) Taxation

Private retirement scheme approved by the Securities Commission Malaysia which is regarded as an approved scheme pursuant to the Act, the income accruing is exempted from tax under the Act.

(g) Distribution

A distribution to the Fund's members is accounted for as a deduction from realised reserve. A proposed distribution is recognised as a liability in the financial period in which it is approved by the Board of Directors of the PRS Provider.

(h) Members' capital

The members' contributions to the Fund meet the criteria to be classified as equity instruments under MFRS 132 "Financial Instruments: Presentation". Those criteria include:

- the units entitle the member to a proportionate share of the Fund's net asset value;
- the units are the most subordinated class and class features are identical;
- there is no contractual obligations to deliver cash or another financial asset other than the obligation on the Fund to repurchase the units; and
- the total expected cash flows from the units over its life are based substantially on the profit or loss and change in the net asset value of the Fund.

The outstanding units are carried at the redemption amount that is payable at the date of the statement of financial position if member exercises the right to put the unit back to the Fund.

Units are created and cancelled at prices based on the Fund's net asset value per unit at the time of creation and cancellation. The Fund's net asset value per unit is calculated by dividing the net assets attributable to members with the total number of outstanding units.

(i) Fair value of financial instruments

Financial instruments comprise financial assets and financial liabilities. Fair value is the price that would be received to sell an asset or paid to transfer a liability in an orderly transaction between market participants at the measurement date. The information presented herein represents the estimates of fair values as at the date of the statement of financial position.

The Fund's financial assets and financial liabilities are measured on an ongoing basis at either fair value or at amortised cost based on the respective classification.

The following table analyses the financial assets and financial liabilities of the Fund in the statement of financial position as at the reporting date:

	Financial assets at FVTPL RM	Financial assets/ liabilities at amortised cost RM	Total RM
31.01.2025			
<u>Financial assets</u>			
Cash and cash equivalents	-	50,024	50,024
Amount due from the PRS Provider			
-management fee rebate	-	418	418
Financial assets at FVTPL (Note 9)	270,750	-	270,750
	270,750	50,442	321,192
<u>Financial liabilities</u>			
Amount due to the PRS Provider			
-management fee	-	493	493
Amount due to the Scheme Trustee	-	11	11
Amount due to the PPA	-	11	11
	-	515	515

	Financial assets at FVTPL RM	Financial assets/ liabilities at amortised cost RM	Total RM
31.07.2024			
<u>Financial assets</u>			
Cash and cash equivalents	-	26,999	26,999
Amount due from the PRS Provider			
-management fee rebate	-	404	404
Financial assets at FVTPL (Note 9)	253,853	-	253,853
	253,853	27,403	281,256
<u>Financial liabilities</u>			
Amount due to the PRS Provider			
-management fee	-	447	447
Amount due to the Scheme Trustee	-	10	10
Amount due to the PPA	-	67	67
	-	524	524

All liabilities are financial liabilities which are carried at amortised cost.

(j) Critical accounting estimates and judgements in applying accounting policies

The Fund makes estimates and assumptions concerning the future. The resulting accounting estimates will, by definition, rarely equal the related actual results. To enhance the information content of the estimates, certain key variables that are anticipated to have material impact to the Fund's results and financial position are tested for sensitivity to changes in the underlying parameters.

Estimates and judgements are continually evaluated by the PRS Provider and are based on historical experience and other factors, including expectations of future events that are believed to be reasonable under the circumstances.

In undertaking any of the Fund's investment, the PRS Provider will ensure that all assets of the Fund under management will be valued appropriately, that is at fair value and in compliance with the Securities Commission Malaysia's Guidelines on Private Retirement Schemes.

However, the PRS Provider is of the opinion that there are no accounting policies which require significant judgement to be exercised.

3. FAIR VALUE ESTIMATION

The fair value of financial assets traded in active market (such as trading securities) are based on quoted market prices at the close of trading on the reporting date. The Fund utilises the last traded market price for financial assets where the last traded price falls within the bid-ask spread. In circumstances where the last traded price is not within the bid-ask spread, the PRS Provider will determine the point within the bid-ask spread that is most representative of the fair value.

A financial instrument is regarded as quoted in an active market if quoted prices are readily and regularly available from an exchange, dealer, broker, industry group, pricing service, or regulatory agency, and those prices represent actual and regularly occurring market transactions on an arm's length basis.

The fair value of financial assets that are not traded in an active market is determined by using valuation techniques. The Fund uses a variety of methods and makes assumptions that are based on market conditions existing at each period/year end date. Valuation techniques used for non-standardised financial instruments such as options, currency swaps and other over-the-counter derivatives, include the use of comparable recent arm's length transactions, reference to other instruments that are substantially the same, discounted cash flow analysis, option pricing models and other valuation techniques commonly used by market participants making the maximum use of market inputs and relying as little as possible on entity-specific inputs.

For instruments for which there is no active market, the Fund may use internally developed models, which are usually based on valuation methods and techniques generally recognised as standard within the industry. Valuation models are used primarily to value unlisted equity, debt securities and other debt instruments for which market were or have been inactive during the financial period/year. Some of the inputs to these models may not be market observable and are therefore estimated based on assumptions.

The output of a model is always an estimate or approximation of a value that cannot be determined with certainty and valuation techniques employed may not fully reflect all factors relevant to the positions the Fund holds. Valuations are therefore adjusted, where appropriate, to allow for additional factors including model risk, liquidity risk and counterparty risk.

An active market is a market in which transactions for the asset or liability take place with sufficient frequency and volume to provide pricing information on an on-going basis.

(i) Fair value hierarchy

The table below analyses financial instruments carried at fair value. The different levels have been defined as follows:

- Quoted prices (unadjusted) in active market for identical assets or liabilities (Level 1);
- Inputs other than quoted prices included within Level 1 that are observable for the asset or liability, either directly (that is, as prices) or indirectly (that is, derived from prices) (Level 2); and
- Inputs for the asset and liability that are not based on observable market data (that is, unobservable inputs) (Level 3).

The level in the fair value hierarchy within which the fair value measurement is categorised in its entirety is determined on the basis of the lowest level input that is significant to the fair value measurement in its entirety. For this purpose, the significance of an input is assessed against the fair value measurement in its entirety. If a fair value measurement uses observable inputs that requires significant adjustment based on unobservable inputs, that measurement is a Level 3 measurement. Assessing the significance of a particular input to the fair value measurement in its entirety requires judgement, considering factors specific to the asset or liability.

The determination of what constitutes ‘observable’ requires significant judgement by the Fund. The Fund considers observable data to be that market data that is readily available, regularly distributed or updated, reliable and verifiable, not proprietary and provided by independent sources that are actively involved in the relevant market.

The following table analyses within the fair value hierarchy of the Fund’s financial assets (by class) measured at fair value:

	Level 1 RM	Level 2 RM	Level 3 RM	Total RM
31.01.2025				
<u>Financial assets at FVTPL:</u>				
- Unquoted collective investment scheme	-	270,750	-	270,750
31.07.2024				
<u>Financial assets at FVTPL:</u>				
- Unquoted collective investment scheme	-	253,853	-	253,853

Financial instruments that trade in markets that are not considered to be active but are valued based on quoted market prices, dealer quotations or alternative pricing sources supported by observable inputs are classified within Level 2. These include unquoted collective investment scheme. As Level 2 instruments include positions that are not traded in active markets and/or are subject to transfer restrictions, valuations may be adjusted to reflect illiquidity and/or non-transferability, which are generally based on available market information. The Fund’s policies on valuation of these financial assets are stated in Note 2(b).

- (ii) The carrying values of financial assets (other than financial assets at FVTPL) and financial liabilities are a reasonable approximation of their fair values due to their short term nature.

4. MANAGEMENT FEE AND MANAGEMENT FEE REBATE

In accordance with Division 15.1 of the Deeds, the PRS Provider is entitled to a management fee of up to 3.00% per annum calculated daily based on the net asset value of the Fund.

For the financial period ended 31 January 2025, the management fee is recognised at a rate of 1.80% (2024: 1.80%) per annum.

The management fee rebate relates to the rebate received from the PRS Provider for investing in unquoted collective investment scheme. The average rates of rebates were calculated on the net asset value of respective unquoted collective investment scheme on a daily basis as follow:

	2025 %	2024 %
Unquoted collective investment scheme: - Hong Leong Asia-Pacific Dividend Fund	1.80	1.80

There is no further liability to the PRS Provider in respect of management fee other than the amount recognised above.

5. SCHEME TRUSTEE'S FEE

In accordance with Division 15.2 of the Deeds, the Scheme Trustee is entitled to a fee not exceeding 2.00% (excluding foreign custodian fees and charges) per annum calculated daily based on the net asset value of the Fund.

For the financial period ended 31 January 2025, the Scheme Trustee's fee is recognised at a rate of 0.04% (2024: 0.04%) per annum.

There is no further liability to the Scheme Trustee in respect of Scheme Trustee's fee other than the amount recognised above.

6. PRIVATE PENSION ADMINISTRATOR'S ("PPA") ADMINISTRATION FEE

For the financial period ended 31 January 2025, the Private Pension Administrator's administration fee is recognised at a rate of 0.04% (2024: 0.04%) per annum calculated daily based on the net asset value of the Fund.

There is no further liability to the PPA in respect of Private Pension Administrator's administration fee other than the amount recognised above.

7. AUDITORS' REMUNERATION AND TAX AGENT'S FEE

For the financial period ended 31 January 2025 and 31 January 2024, auditors' remuneration and tax agent's fee were borne by the PRS Provider.

8. TAXATION

	2025 RM	2024 RM
Tax charge for the financial period: Current taxation	-	-

The numerical reconciliation between loss before taxation multiplied by the Malaysian statutory income tax rate and tax expense of the Fund is as follows:

	2025 RM	2024 RM
Loss before taxation	(4,545)	(33,104)
Taxation at Malaysian statutory rate of 24% (2024: 24%)	(1,091)	(7,945)
Tax effects of:		
Investment loss disallowed from tax	968	7,828
Expenses not deductible for tax purposes	41	32
Restriction on tax deductible expenses for PRS Fund	82	85
Taxation	-	-

9. FINANCIAL ASSETS AT FAIR VALUE THROUGH PROFIT OR LOSS ("FVTPL")

	31.01.2025 RM	31.07.2024 RM
<u>Financial assets at FVTPL:</u>		
Unquoted collective investment scheme	270,750	253,853
	2025 RM	2024 RM
<u>Net loss on financial assets at FVTPL:</u>		
Changes in unrealised fair values	(4,603)	(33,224)
Management fee rebate (Note 4)	2,352	1,414
	(2,251)	(31,810)

Financial assets at FVTPL as at 31 January 2025 are as detailed below:

	Quantity Units	Aggregate cost RM	Fair value RM	Percentage of net asset value %
UNQUOTED COLLECTIVE INVESTMENT SCHEME				
Hong Leong Asia-Pacific Dividend Fund	637,210	312,290	270,750	84.43
TOTAL UNQUOTED COLLECTIVE INVESTMENT SCHEME	637,210	312,290	270,750	84.43
UNREALISED LOSS ON FINANCIAL ASSETS AT FVTPL		(41,540)		
TOTAL FAIR VALUE OF FINANCIAL ASSETS AT FVTPL		270,750		

Financial assets at FVTPL as at 31 July 2024 are as detailed below:

	Quantity Units	Aggregate cost RM	Fair value RM	Percentage of net asset value %
UNQUOTED COLLECTIVE INVESTMENT SCHEME				
Hong Leong Asia-Pacific Dividend Fund	588,168	290,790	253,853	90.42
TOTAL UNQUOTED COLLECTIVE INVESTMENT SCHEME	588,168	290,790	253,853	90.42
UNREALISED LOSS ON FINANCIAL ASSETS AT FVTPL		(36,937)		
TOTAL FAIR VALUE OF FINANCIAL ASSETS AT FVTPL		253,853		

10. UNITS IN CIRCULATION

	01.08.2024 to 31.01.2025 No. of units	01.08.2023 to 31.07.2024 No. of units
At the beginning of the financial period/year	664,543	236,470
Add: Creation of units during the financial period/year		
- Arising from applications	108,658	445,984
Less: Cancellation of units during the financial period/year	(4,600)	(17,911)
At the end of the financial period/year	768,601	664,543

11. TOTAL EXPENSE RATIO ("TER")

	2025 %	2024 %
TER (annualised)	1.91	1.92

Total expense ratio includes management fee (excluding management fee rebate), Scheme Trustee's fee, PPA administration fee and other expenses for the financial period divided by the Fund's average net asset value calculated on a daily basis and is calculated as follows:

$$\text{TER} = \frac{(A+B+C+D)}{E} \times 100$$

Where;

- A = Management fee (excluding management fee rebate)
- B = Scheme Trustee's fee
- C = PPA administration fee
- D = Other expenses
- E = Average net asset value of the Fund calculated on a daily basis

The average net asset value of the Fund for the financial period calculated on a daily basis is RM296,967 (2024: RM196,602).

12. PORTFOLIO TURNOVER RATIO ("PTR")

	2025 Times	2024 Times
PTR	0.04	0.40

PTR is derived from the following calculation:

(Total acquisitions for the financial period + total disposals for the financial period) / 2

Average net asset value of the Fund for the financial period calculated on a daily basis

Where;

- total acquisitions for the financial period
= RM21,500 (2024: RM157,433)
- total disposals for the financial period
= NIL

13. UNITS HELD BY THE PRS PROVIDER AND RELATED PARTIES TRANSACTIONS AND BALANCES

The related parties and their relationships with the Fund are as follows:

Related parties	Relationships
Hong Leong Asset Management Bhd	The PRS Provider
Hong Leong Islamic Asset Management Sdn Bhd	Subsidiary of the PRS Provider
Hong Leong Capital Berhad	Holding company of the PRS Provider
Hong Leong Financial Group Berhad ("HLFG")	Ultimate holding company of the PRS Provider
Subsidiaries and associates of HLFG as disclosed in its financial statements	Subsidiaries and associate companies of the ultimate holding company of the PRS Provider

No units were held by the PRS Provider and parties related to the PRS Provider as at 31 January 2025 and 31 July 2024.

In addition to related party disclosures mentioned elsewhere in the financial statements, set out below are other related party transactions and balances. The PRS Provider is of the opinion that all transactions with the related companies have been entered into at agreed terms between the related parties.

	31.01.2025 RM	31.07.2024 RM
<u>Related party balances</u>		
Cash at bank:		
- Hong Leong Bank Berhad	50,024	26,999

	2025 RM	2024 RM
<u>Related party transactions</u>		
Interest income from auto-sweep facility bank account:		
- Hong Leong Bank Berhad	568	608

Purchase of unquoted collective investment scheme:		
- Hong Leong Asset Management Bhd	21,500	157,433

14. TRANSACTIONS WITH BROKERS/DEALERS

For the financial period ended 31 January 2025 and 31 January 2024, there are no transactions with brokers/dealers.

Performance Data

for the Financial Period Ended 31 January/31 July and
Financial Year Ended 31 July

		Financial Period Jan 2025 %	Financial Year 2024 %	Financial Period Jul 2023 [^] %
A.	(i) Portfolio Compositions:			
	Collective Investment Scheme	84.43	90.42	81.28
	Deposits & Cash Equivalents	15.57	9.58	18.72
	(ii) Total Net Asset Value (ex-distribution)	RM320,691	RM280,746	RM118,556
	(iii) Net Asset Value Per Unit (ex-distribution)	RM0.4172	RM0.4225	RM0.5014
	Units in Circulation (ex-distribution)	768,601	664,543	236,470
	(iv) Highest/Lowest NAV Per Unit (ex-distribution)	Highest NAV Per Unit Lowest NAV Per Unit	RM0.4987 RM0.4078	RM0.5458 RM0.4672
	(v) Total Return of the Fund*	-1.25%	-15.74%	0.28%
	- Capital Growth	-1.25%	-15.74%	0.28%
	- Income Distribution	-	-	-
	(vi) The distribution (gross) is made out of:-			
	- The Fund's Capital	-	-	-
	- The Fund's Income	-	-	-
	- Total Distribution Amount	-	-	-
	- The Fund's Capital (% of Total Distribution Amount)	-	-	-
	- The Fund's Income (% of Total Distribution Amount)	-	-	-
	(vii) Distribution Per Unit			
	Additional Units	-	-	-
	Distribution (Gross)	-	-	-
	Distribution (Net)	-	-	-
	Distribution Date	-	-	-
	Cum-Distribution NAV/Unit	-	-	-
	Ex-Distribution NAV/Unit	-	-	-
	(viii) Total Expense Ratio (TER)	1.91%	1.90%	1.83%
	(ix) Portfolio Turnover Ratio (PTR) (times)	0.04#	0.40	0.71
B.	Average Total Return, NAV Per Unit-to-NAV Per Unit basis (as at 31/01/2025)*			
	(i) One year	-1.35%		

* Source: Lipper
(Returns are calculated after adjusting for distributions and/or additional units, if any)

[^] The figure shown is for the period since Fund launch (20 December 2022 to 31 July 2023).

The PTR decreased by 0.36 times (90.00%) to 0.04 times for the financial period from 1 August 2024 to 31 January 2025 versus 0.40 times for the financial year ended 31 July 2024 and 0.36 times (90.00%) as compared to 0.40 times for the financial period from 1 August 2023 to 31 January 2024 mainly due to lower level of rebalancing activities undertaken by the Fund.

Corporate Information

PRS Provider

Hong Leong Asset Management Bhd [199401033034 (318717-M)]

Registered Office

Level 30, Menara Hong Leong
No. 6, Jalan Damanlela
Bukit Damansara
50490 Kuala Lumpur

Business Office

Level 18, Block B, Plaza Zurich
No. 12, Jalan Gelenggang
Bukit Damansara
50490 Kuala Lumpur

Board of Directors

Ms. Lee Jim Leng
Mr. Chue Kwok Yan
YBhg Dato’ Abdul Majit bin Ahmad Khan
YM Tunku Dato’ Mahmood Fawzy bin Tunku Muhiyiddin

Executive Director/Chief Executive Officer

Mr. Chue Kwok Yan

Scheme Trustee

CIMB Commerce Trustee Berhad [199401027349 (313031-A)]

Auditor

PricewaterhouseCoopers PLT (LLP0014401-LCA & AF 1146)

Distributor

Registered Independent Tied Agents with FIMM

Corporate Directory

Head Office

Level 18, Block B, Plaza Zurich
No. 12, Jalan Gelenggang
Bukit Damansara
50490 Kuala Lumpur
Tel: 03-2081 8600
Fax: 03-2081 8500
Website: www.hlam.com.my
E-mail: inquiry@hlam.hongleong.com.my

Pulau Pinang

No. 441-1-3, Pulau Tikus Plaza
Jalan Burmah, Pulau Tikus
10350 Pulau Pinang
Tel: 04-228 8112, 04-228 9112
Fax: 04-228 3112

Ipoh

2nd Floor, Lot 3, Persiaran Greentown 4
Greentown Business Centre
30450 Ipoh, Perak
Tel: 05-255 8388, 05-255 9388
Fax: 05-255 8389



Hong Leong Asset Management Bhd
www.hlam.com.my

